

Products Summary

GIVING YOU THE BEST PIPING SYSTEMS SUPPORT

PG1: Constant Hanger Supports

To support the weight of pipework or equipment by delivering a nominally Constant resisting force through its full range of travel by means of a rotating bell-crank concept.



PG2: Variable Hangers & Supports

To support the weight of pipework or equipment by an effort generated by the spring to support the pipe.



PG3: Rigid Struts & Snubbers (Dynamic Restraints)

Intended to protect the pipework, plant, and structure from abnormal conditions while it should not impede the function of the supports.



PG4: Pipe Clamps & Ancillaries

Components connected to the main pipework or trunnion supports are designed with standardized load-carrying capacities & ancillaries compatible with metric hanger rods.



PG5: Easislide Low Friction Bearings

Designed to minimize the frictional force between the item and structure and also to prevent the development of high load and stresses.



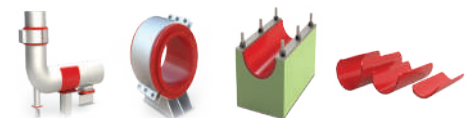
PG6: Comlin Isolation Products

Elastomeric materials used to reduce or eliminate noise and fatigue due to the vibration of pipework and prevent galvanic corrosion and wear.



PG7: Bergatherm

Specially designed Fiber-Reinforced Polymer (FRP) composites to produce a high-load bearing product, suitable for use in cryogenic and similar demanding applications.



PG8: Cryogenics

Rigid high-density polyurethane materials (HD PUF) are used for Cryogenic applications to give extremely low thermal conductivity combined with good compressive, flexural, and tensile strength properties.



Customized Supports

Wide range of engineering solutions for Customized secondary supports to meet as per Project specifications.



The first and only in Kingdom pipe support manufacturer and field services provider

E-mail: info@keksa.com, sales@keksa.com | www.keksa.com

Field Services Summary

GIVING YOU THE BEST PIPING SYSTEMS SUPPORT

Field Services

Field Survey & Inspection

To avoid costly damage and operational breakdown our engineers conduct regular inspection of piping system and the condition of supports. We produce comprehensive report and provide the appropriate recommendations for a solution, when needed.

Installation & Commissioning

Most pipe stresses are due to mistakes made during installation and commissioning. Our engineers will supervise the installation of pipe supports, deblock, commission the supports, conduct load and travel checks after commissioning.

Testing & Maintenance

Our engineers conduct repairs based on inspection findings and carry out preventive maintenance during planned shutdown to ensure the mechanical integrity and functionality of supports. Our engineers can also calibrate spring supports at our testing facility.

Field Survey & Inspection



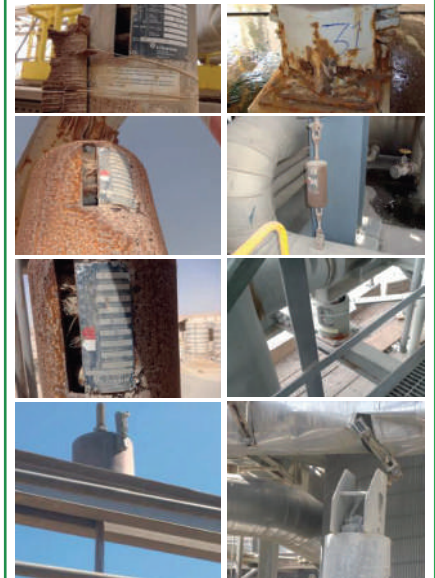
Testing & Maintenance



Installation & Commissioning



The faults most frequently noted in pipe supports



The first and only in Kingdom pipe support manufacturer and field services provider

E-mail: info@keksa.com, sales@keksa.com | www.keksa.com